



LEGEND		
EXISTING	NEW	LOW DEM.
WALLS		
NEW/RELOCATED DOOR		

ISSUE DATES

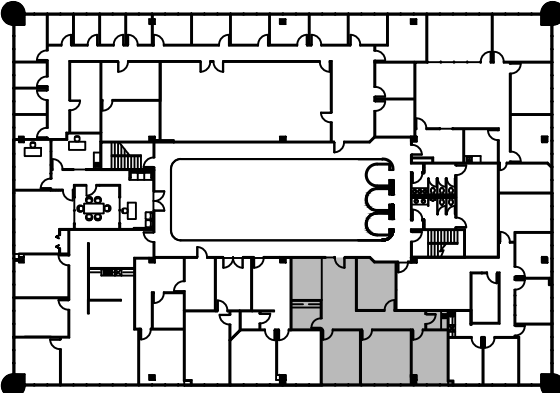
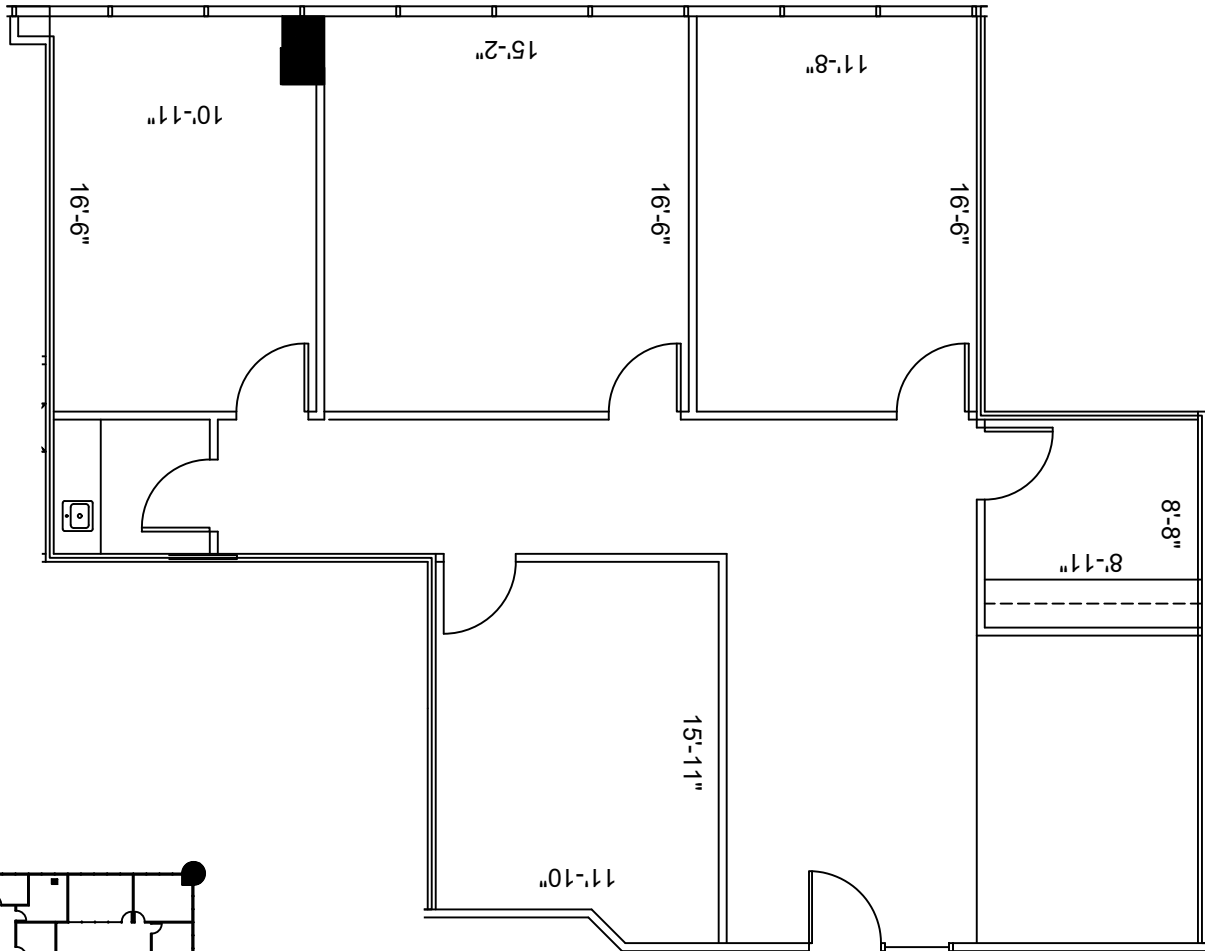
NO.	DATE	REASON
1	11-12-2020	ISSUING FOR REVIEW

652 - 11811 NORTH FREEWAY
 11811 NORTH FREEWAY HOUSTON, TX 77060
 SUITE 415

PROJECT:	652-11811 NORTH FREEWAY
PLOT SCALE:	1/8"=1'-0"
CHECKED BY:	WM
FILE NAME:	652-11811 NORTH FREEWAY
DRAWN BY:	WM

SHEET TITLE
 EXISTING PLAN

SHEET NUMBER
 EX-1



4th FLOOR
 KEY PLAN

1 SUITE 415
 1,674 NRA
 FLOOR PLAN
 SCALE: 1/8"=1'-0"

FLOOR PLANS MAY NOT BE TO SCALE AND MAY NOT REFLECT EXISTING CONDITIONS AND SHALL NOT BE RELIED UPON AS SUCH THESE DRAWINGS ARE DESIGN INTENT AND ARE AN EXHIBIT TO THE LEASE