



LEGEND

EXISTING	NEW	LOW	DEMO
WALLS:			
NEW/RELOCATED DOOR	NR		

ISSUE DATES

NO.	DATE	REVISION
1	05-27-21	LEASING REVIEW

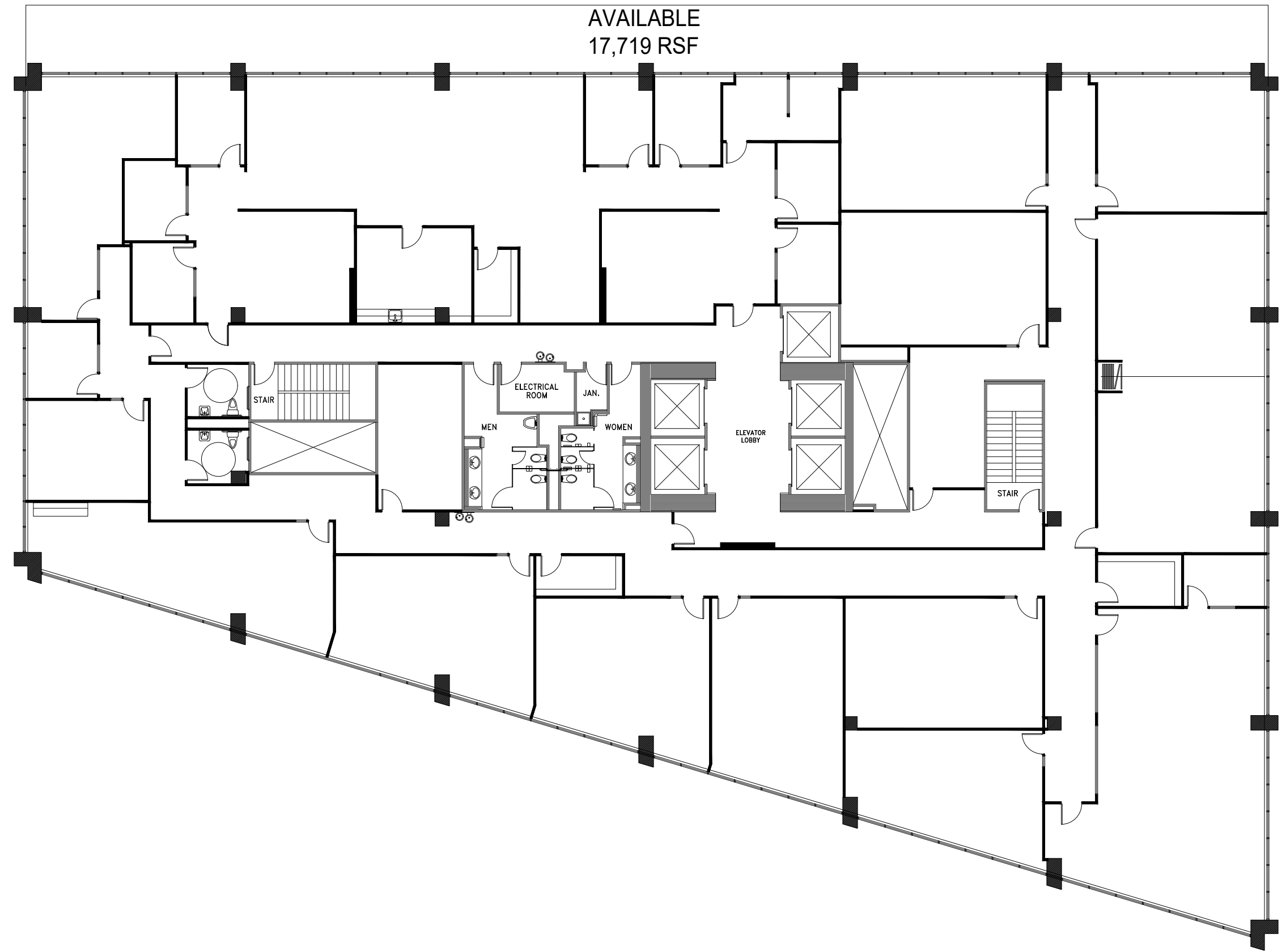
GATEWAY TOWER
 8111 LBJ FREEWAY
 DALLAS, TX 75251
 LEVEL 11

PROJECT:	692- GATEWAY TOWER
PLOT SCALE:	1/16"=1'-0"
CHECKED BY:	AE
DRAWN BY:	AE
FILE NAME:	692- GATEWAY TOWER

SHEET TITLE
 EXISTING PLAN

SHEET NUMBER
 EX-1

SUITE 1100
 AVAILABLE
 17,719 RSF



LEVEL 11

1 FLOOR PLAN
 SCALE: 1/16"=1'-0"

FLOOR PLANS MAY NOT BE TO SCALE AND MAY NOT REFLECT EXISTING CONDITIONS AND SHALL NOT BE RELIED UPON AS SUCH THESE DRAWINGS ARE DESIGN INTENT AND ARE AN EXHIBIT TO THE LEASE