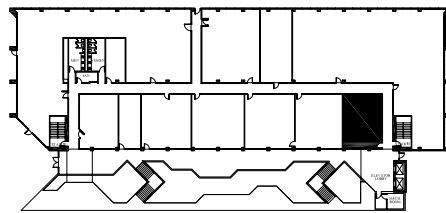
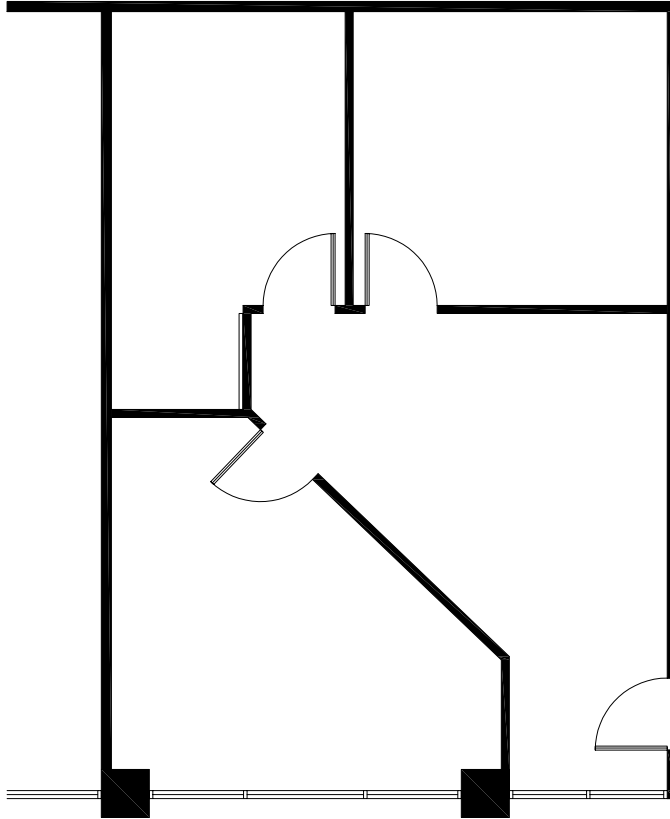


# CORPORATE PARK PLACE

1333 Corporate Drive, Irving, Texas

SUITE 100  
945 RSF



## 1ST FLOOR

Scale: 1/8"=1'-0"

All dimensions and square footages are approximate.

April 2, 2009

Managed and Leased By:

### FOBARE COMMERCIAL

18111 PRESTON ROAD - SUITE 1000 - DALLAS, TX. 75252 (972) 458-7585 - FAX (972) 458-0267